

# CONFINED SPACE CONTROL COVERS

High Quality

Lockable

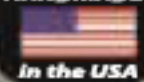
Reusable

Durable

Re-designed Lockable cover sleeve  
Easier to use!



PROUDLY  
HANDMADE



Ventilated w/ port    Solid FME    Red Mesh    Ratchet Strap    Velcro    Elastic    Magnetic



Tower Skirt Covers

Confined Space Control Covers was invented, patented and is manufactured by a chemical plant operator/U.S. military veteran who has been in the industry for over 17 years. Confined Space Control Covers were designed with the goal of keeping employees/contractors safe while also reducing the company's overall liability.

Even with today's standard operating procedures, company guidelines and confined space requirements, injuries and deaths still occur. By incorporating Confined Space Control Covers, your company demonstrates its commitment to the safety of their employees while reducing the risk of violations/fines. Ultimately it saves lives and money.

By offering both barrier protection & signage, your company can secure and communicate confined space openings on man-ways, heater doors, nozzles, columns, tower/vessel skirts & more. Our lockable and adjustable Confined Space Control Cover is fitted over the existing flange and is secured by installing a safety padlock, giving safety personnel 100% control of the confined space and forcing personnel to follow proper procedure.

These covers are being utilized in downstream refining, petrochemical, offshore, shipyards, and various other industries. With the increasing global attention and demand for Confined Space Control Covers, they are well on their way to changing the industry standard.

## LOCKABLE SOLID COVER

ITEM # CCS & CCSP

Patent No: US 8,684,061



Optional 1½" Gas Test Port  
Maximum Protection

## LOCKABLE VENTILATED COVER

ITEM # CCVP

Patent No: US 8,684,061



1½" Gas Test Port  
Fire Resistant Mesh for areas that need proper ventilation

ConfinedSpaceControlCovers.com

- Designed to withstand long-term use in harsh conditions
- Easily incorporated in LOCKOUT/TAGOUT
- Maximum protection and documentation that the confined space is secured
- Can replace the need for a hole watch
- Resistant against oils & hydro-carbons
- Fire and chemical resistant PVC coated Polyester can withstand high temperatures.
- Bright Red for high visibility
- Advanced Foreign Material Exclusion and barrier protection

## STANDARD LOCKABLE MESH

ITEM # SLM



Patent No: US 8,684,061

**Make dramatic safety improvements  
fit within your current budget.**

**Easy to use & installs in seconds.**

*"Our primary use for the covers has been to restrict entry to tanks during the cleaning and maintenance work. These covers have allowed us to clearly indicate that the space is to not be entered without an entry permit, keep trash and animals out, as well as be much easier to use than traditional barricade tape.*

*- Process Mechanical Contact, ExxonMobil - TX"*

**ELASTIC MESH COVER  
ITEM # MER**



Patent Pending

**MAGNETIC MESH COVER  
ITEM # MAGRM**



- Designed for high traffic openings.
- Bright red FR treated solid & mesh material for high visibility, can withstand up to 400° F.
- Easily clean and store to reuse for years.

**NEW  
LOCKABLE**

**COLUMN / TOWER SKIRT COVERS**



Patent Pending



**RATCHET STRAP COVERS  
ITEM # RS**

**VELCRO COVERS  
ITEM # RS**

- Available in a set & as single covers. (SET= (1) Cover, (2) Ratchets with appropriate length strapping attached.)
- Have multiple openings on the same skirt? No problem! Order a cover set & add additional single covers.

Before

After

Before

After

Before

After



Join the growing number of companies that have standardized their confined space procedures by including Confined Space Control Covers in their warehouse/storerooms for every day operations. Increase productivity with fast installation, and earlier back in service time. Essential for Turn Arounds!



# Confined Space Control Covers

## ★ Lockable Ratchet Strap Column/Skirt Covers Installation Instructions ★

\*PLEASE READ AND FOLLOW ALL INFORMATION AND INSTRUCTIONS. FAILURE TO FOLLOW INSTRUCTIONS CAN RESULT IN IMPROPER USE AND PROTECTION OF YOUR CONFINED SPACE.

\*COVERS ARE DESIGNED FOR LONG-TERM USE AND TO WITHSTAND CONSTANT EXPOSURE TO THE ELEMENTS.

BEFORE INITIAL USE: Inspect product for defects. If defects are present, contact CSCC Incorporated immediately for replacement. DO NOT USE if defective.

**TIPS & TRICKS:** Covers can be installed quickest with two people.

Do you have multiple opening around the same column? Quickly and easily hang as many covers as you need on the same straps to secure them all at the same time!

Locking is recommended but not required. This cover gives you the option to install a padlock, carlock, or simply tighten ratchet strap & leave as is.

### HOW TO INSTALL

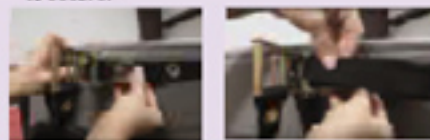
- 1** Unfold cover and inspect to ensure that you have your correct cover size and two ratchets with strapping attached.



- 2** Feed straps through cover holes on top & bottom of cover. If multiple openings are present, add additional covers onto straps.



- 3** Have someone assist you by holding the top ratchet and top of cover in position over the opening while you walk & stretch the strap around the skirt. When you meet back up with the top ratchet that is being held into position, feed the end of the strap through the ratchet to secure.



- 4** If needing to install padlock, it is best for you to run your lock through the first grommet, then crank the ratchet tight.



- 5** Insert padlock through grommet on handle and lock.



- 6** Repeat steps to secure bottom strap as well.



### HELPFUL TIPS & INFO:

See images...

If the column/skirt has a transition which restricts your cover from making contact with the entire surface area, feel free to cut additional 2" vertical slits anywhere within the solid material on the sides of the cover so that you are able to tie additional rope/wire/cord/etc where needed to ensure the best fit.



**CLEANING AND STORAGE:** May be cleaned with mild soap & water. DO NOT scrub with harsh or abrasive material /solvents.

Rinse thoroughly then lay flat. Allow to dry completely. Once dry, roll or fold cover, stack/store in a secure location.

Do not store in closed container unless completely dry and free of moisture.

Wash hands thoroughly after handling.

1860 HWY 36 BYPASS  
ALVIN, TEXAS 77511

**(281) 331-2035**  
[WWW.BEED.COM](http://WWW.BEED.COM)



# Confined Space Control Covers



## Handling/Installation Instructions for Lockable Covers



\*PLEASE READ AND FOLLOW ALL INFORMATION AND INSTRUCTIONS. FAILURE TO FOLLOW INSTRUCTIONS CAN RESULT IN IMPROPER USE AND PROTECTION OF YOUR CONFINED SPACE.

\*FABRIC MAY BE STIFF WHEN NEW, BUT WILL BREAK IN AFTER SEVERAL USES.

\*FABRIC IS MANUFACTURED USING A SPECIAL REINFORCED TECHNIQUE, MAKING THEM RESISTANT TO TEARING/RIPPING. EVEN WITH ABRASION, WEAR AND PUNCTURES, CONFINED SPACE CONTROL COVERS SHOULD OFFER THE SAME LEVEL OF PROTECTION AS WHEN NEW.

BEFORE INITIAL USE: inspect product for defects. If defects are present, contact CSCC Incorporated immediately for replacement. DO NOT USE if defective.

### HOW TO INSTALL

**1** Locate strap ends at sleeve opening. Grabbing both ends, push fabric down.



**2** Work fabric creases around cover to gather fabric and expose strap.



**3** Feed gathered fabric around the cover, creating a pocket.



**4** Place pocket over edge of flange. Work cover evenly around entire man-way.



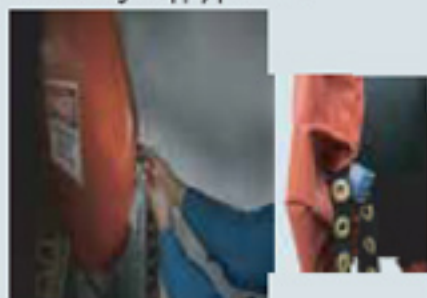
**5** Position cover evenly, making sure signage is straight. Pull both straps to wrap cover around back of flange.



**6** Cross straps and pull tightly to secure cover and expose grommets.



**7** Join two grommets closest to back of flange. Apply padlock.



Ventilated cover styles also available.



**CLEANING AND STORAGE:** May be cleaned with mild soap & water. DO NOT scrub with harsh or abrasive material /solvents. Rinse thoroughly then lay flat. Allow to dry completely. Once dry, roll or fold cover, stack/store in a secure location. Do not store in closed container unless completely dry and free of moisture. Wash hands thoroughly after handling.

1850 HWY 35 BYPASS  
ALVIN, TEXAS 77511

**(281) 331-2035**

**WWW.BEAED.COM**



# Confined Space Control Covers



## Velcro Tower/Vessel Skirt Covers Handling and Installation Instructions



\*PLEASE READ AND FOLLOW ALL INFORMATION AND INSTRUCTIONS. FAILURE TO FOLLOW INSTRUCTIONS CAN RESULT IN IMPROPER USE AND PROTECTION OF YOUR CONFINED SPACE.

\*COVERS ARE DESIGNED FOR LONG-TERM USE AND TO WITHSTAND CONSTANT EXPOSURE TO THE ELEMENTS. THE USE OF A RELIABLE ADHESIVE/EPOXY WILL ENSURE BEST RESULTS.

**BEFORE INITIAL USE:** Inspect product for defects. If defects are present, contact CSCC Incorporated immediately for replacement. DO NOT USE if defective.

**\*Surface Preparation:** For high strength structural bonds, paint, oxide films, oils, dust, mold, release agents & all other surface contaminants must be completely removed. However, the amount of surface preparation directly depends on the required bond strength, environmental aging resistance and economic practicalities.

### ADDITIONAL ITEMS YOU WILL NEED:

#### Adhesive

(Resinab EP1305 or other)



#### Reinforcing Epoxy Rods / rods

We recommend & stock **Resinab EP1305** it is highly toughened anisotropic modified epoxy designed for bonding PVC, metals, ceramics & other difficult to bond substrates. Bonds in extreme weather conditions. 50 ml Cartridge available.

(length depends on skirt size)



(per cover)



## HOW TO INSTALL

**1** Clean surface area. Hold cover over opening to determine correct alignment & position.



**2** Mark corners on surface to help reference proper placement when installing.



**3** Lay cover flat. Apply adhesive on back of velcro. Make sure to apply adhesive close to edges. (as shown)



**4** Allow adhesive to get tacky for easier installation. If adhesive is not tacky enough, it may shift while trying to install, making it more difficult to secure.



\*reference adhesive's "Wet Life/Pot Life" for proper time.

**5** Once adhesive is tacky, apply cover to the pre-marked surface. Repeatedly pat & press firmly on entire velcro surface of cover to ensure that adhesive is making contact.



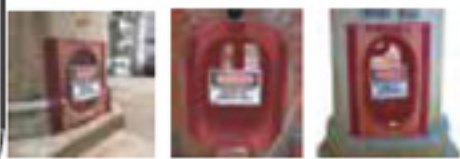
**6** If there are multiple openings on one skirt, repeat this process to install other cover(s). Wrap your cords/ropes around skirt along both bottom & top of cover(s). (as shown)



**7** Install sticks, pull & tighten ropes as much as possible to ensure contact of adhesive to surface until cured. (as shown) Remove ropes & sticks when cured.



**CLEANING AND STORAGE:** May be cleaned with mild soap & water. DO NOT scrub with harsh or abrasive material /solvents. Rinse thoroughly then lay flat. Allow to dry completely. Once dry, roll or fold cover; stack/store in a secure location. Do not store in closed container unless completely dry and free of moisture. Wash hands thoroughly after handling.



Solid FME covers also available.



1850 HWY 35 BYPASS  
ALVIN, TEXAS 77511

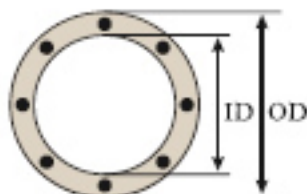
**(281) 331-2035**

[WWW.BEaed.COM](http://WWW.BEaed.COM)

STANDARD SIGN



Custom signs and covers available upon request.



Assistance is needed in determining size, please contact us directly.

QUICK HELPFUL SIZING CHART FOR LOCKABLE & ELASTIC COVERS

FLANGE SIZE

	2" Flange	4" Flange (150 lb)	5" Flange	6" Flange (300 lb)	7" Flange (600 lb)	8" Flange (900 lb)
12"	MINI	MINI	SMALL	MEDIUM	MEDIUM	LARGE
14"	MINI	MINI or XS	SMALL	MEDIUM	MEDIUM	LARGE
16"	MINI	XS	SMALL	MEDIUM	MED or LARGE	LARGE or XL
18"	MINI or XS	XS or SMALL	SMALL or MED	MEDIUM	LARGE	XL
20"	X-SMALL	SMALL	MEDIUM	MED or LARGE	LARGE	XL
21"	X-SMALL	SMALL	MEDIUM	LARGE	LARGE	XL
22"	X-SMALL	SMALL	MEDIUM	LARGE	LARGE or XL	XL
23"	X-SMALL or SM	SM or MED	MEDIUM	LARGE	XL	XL
24"	SMALL	MEDIUM	MED or LARGE	LARGE	XL	custom
25"	SMALL	MEDIUM	LARGE	LARGE	XL	custom
26"	SMALL	MEDIUM	LARGE	LARGE or XL	XL	custom
27"	SMALL or MED	MEDIUM	LARGE	XL	XL	custom
28"	MEDIUM	MED or LARGE	LARGE	XL	custom	custom
29"	MEDIUM	LARGE	LARGE or XL	XL	custom	custom
30"	MEDIUM	LARGE	XL	XL	custom	custom
31"	MEDIUM	LARGE	XL	XL	custom	custom
32"	MED or LARGE	LARGE	XL	custom	custom	custom
33"	LARGE	LARGE or XL	XL	custom	custom	custom
34"	LARGE	XL	XL	custom	custom	custom
35"	LARGE	XL	XL	custom	custom	custom
36"	LARGE	XL	custom	custom	custom	custom
37"	LARGE or XL	XL	custom	custom	custom	custom
38"	XL	XL	custom	custom	custom	custom
39"	XL	XL	custom	custom	custom	custom
40"	XL	custom	custom	custom	custom	custom

INSIDE DIAMETER

- Small** - Fits standard 20" manways
- Medium** - Fits standard 24" manways
- Large** - Fits standard 30" manways
- XLarge** - Fits standard 36" manways

Part No.	Size	Description
CCS-0001	S	<b>Solid Lockable</b> Premium Cover
CCS-0002	M	<b>Solid Lockable</b> Premium Cover
CCS-0003	L	<b>Solid Lockable</b> Premium Cover
CCS-0004	XL	<b>Solid Lockable</b> Premium Cover
CCSP-0005	S	<b>Solid Lockable</b> Premium Cover w/ test port
CCSP-0006	M	<b>Solid Lockable</b> Premium Cover w/ test port
CCSP-0007	L	<b>Solid Lockable</b> Premium Cover w/ test port
CCSP-0008	XL	<b>Solid Lockable</b> Premium Cover w/ test port
CCVP-1300	S	<b>Ventilated Lockable</b> Premium Cover w/ test port
CCVP-1400	M	<b>Ventilated Lockable</b> Premium Cover w/ test port
CCVP-1500	L	<b>Ventilated Lockable</b> Premium Cover w/ test port
CCVP-1600	XL	<b>Ventilated Lockable</b> Premium Cover w/ test port
SLM-1800*	XS	<b>Ventilated Lockable</b> Red Mesh Cover
SLM-2000	S	<b>Ventilated Lockable</b> Red Mesh Cover
SLM-2400	M	<b>Ventilated Lockable</b> Red Mesh Cover
SLM-3000	L	<b>Ventilated Lockable</b> Red Mesh Cover
SLM-3600	XL	<b>Ventilated Lockable</b> Red Mesh Cover
MAGRM-22*	XS	<b>Magnetic</b> 22" Round Red Mesh Cover
MAGRM-30	S	<b>Magnetic</b> 30" Round Red Mesh Cover
MAGRM-36	M	<b>Magnetic</b> 36" Round Red Mesh Cover
MAGRM-42	L	<b>Magnetic</b> 42" Round Red Mesh Cover
MAGRM-52	XL	<b>Magnetic</b> 52" Round Red Mesh Cover

Part No.	Size	Description
MER-1200*	MINI	<b>Elastic</b> Red Mesh Cover
MER-1600*	XS	<b>Elastic</b> Red Mesh Cover
MER-2000	S	<b>Elastic</b> Red Mesh Cover
MER-2400	M	<b>Elastic</b> Red Mesh Cover
MER-3000	L	<b>Elastic</b> Red Mesh Cover
MER-3600	XL	<b>Elastic</b> Red Mesh Cover
TSV-2424	XS	24" Square <b>Velcro</b> Red Mesh Cover
TSV-3030	S	30" Square <b>Velcro</b> Red Mesh Cover
TSV-4040	M	40" Square <b>Velcro</b> Red Mesh Cover
TSV-3054	L	30"W x 54"H <b>Velcro</b> Red Mesh Cover
TSV-4268	XL	42"W x 68"H <b>Velcro</b> Red Mesh Cover
RS-2424	S	<b>Ratchet Strap-Lockable</b> 24" Square Cover -SET
RS-4040	M	<b>Ratchet Strap-Lockable</b> 40" Square Cover -SET
RS-3048	L	<b>Ratchet Strap-Lockable</b> 30"W x 48" H Cover -SET
RS-3058	XL	<b>Ratchet Strap-Lockable</b> 30"W x 58" H Cover -SET
RS-2424-I	S	<b>Single-</b> 24" Square <b>Lockable Ratchet Strap</b> Cover
RS-4040-I	M	<b>Single-</b> 40" Square <b>Lockable Ratchet Strap</b> Cover
RS-3048-I	L	<b>Single-</b> 30"W x 48"H <b>Lockable Ratchet Strap</b> Cover
RS-3058-I	XL	<b>Single-</b> 30"W x 58"H <b>Lockable Ratchet Strap</b> Cover

\* Indicates item not a permanently stocked item & may require manufacturing time.  
 CSCC Incorporated has the ability to customize any cover to fit your needs. Including custom sizes, shapes, features, signage, etc. Contact us for assistance.

Tower Skirt Covers



1850 HWY 35 BYPASS  
 ALVIN, TEXAS 77511

(281) 331-6000 FAX

**(281) 331-2035**

WWW.BEAED.COM SALES@BEAED.COM